

Fleet Management System

GSM/CDMA All Digital Solution

The small box
that leaves a big
impression



- **COMPACT SIZE**
3 1/2" x 1 1/2" x 2"
- **ALL DIGITAL GSM-GPRS/SMS
CDMA 1X/SMS SOLUTION**
*Utilizing the latest digital cellular network
More reliable than old analog technology*
- **4 INPUTS/2 OUTPUTS**
- **GEO-FENCE CAPABILITIES**
*Create a virtual fence and be alerted
when a vehicle travels outside the set
boundary. Set geo-fence by address
or at the location of the unit.*
- **REMOTE VEHICLE LOCK/ UNLOCK,
STARTER DISABLE**
- **SPEED AND EXCESSIVE
IDLE ALERT**
*Automatically reports when vehicle exceeds
preset speed limit or sits idle
for longer than designated time.*
- **PANIC SWITCH**
*Connect automatically to preset contacts
with Panic Switch feature*
- **REAL TIME POLL AND RESPOND
AUTOMATIC TRACKING**
*Set tracking intervals from
30 seconds to 24 hours
Data logging function stores 1,000
positions*
- **LOW POWER CONSUMPTION**
*Optional battery backup system
Battery status reports*

The FMS Mobile Unit is a GPS
based vehicle navigation,
communication and location system.

Among its most common
applications are fleet management,
asset/trailer tracking, cargo security
and remote command/control.

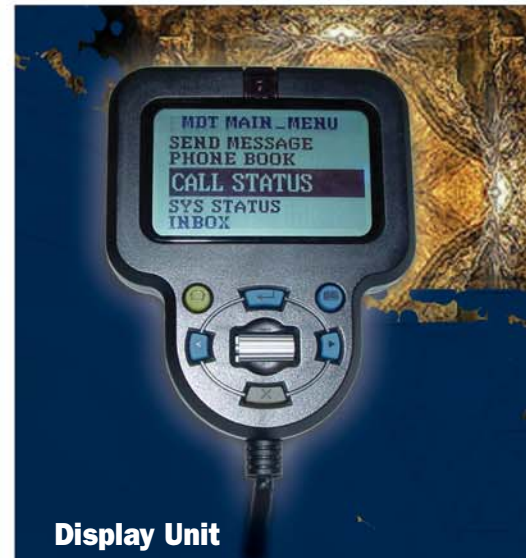
Digital Fleet Management System
with Two-way Text Messaging and
Hands-Free Voice Communications

GSM-CDMA



800 S. Harbor Blvd., Ste. 220 Anaheim, Ca 92805

(714) 502-6900 / fax: (714) 502-6905
info@argonav.com www.argonav.com



Display Unit

- DASH OR VENT MOUNT
- 3" LCD DISPLAY WITH BACKLIGHT
- RECEIVE TEXT MESSAGES
- SEND PRE-PROGRAMMED MESSAGES
- PHONE BOOK
- INBOX MESSAGE MANAGEMENT
- CALL STATUS SCREEN
- SYSTEM STATUS SCREEN
- EASY TO SCROLL AND PUSH BUTTON
OPERATION
- TWO-WAY VOICE AND TEXT
CAPABILITY



Voice Capabilities

- HANDS-FREE KIT REMOTE SPEAKER
AND MICROPHONE
- CALL PREPROGRAMMED NUMBERS

Digital Fleet Management System

GENERAL SPECIFICATIONS:

Radio Characteristics

Frequencies:	850, 900, 1800, and 1900 (GSM) 800, 1800, and 1900 (CDMA)
Transmit Power:	2W@850/900, 1W@1800/1900 (GSM) 0.3W@800 (CDMA)
Sensitivity:	-106dB (GSM), -104dB (CDMA)

Power Specifications (12V or 24V)

Power Input:	9V-32V DC
Radio and GPS ON@12V:	70 mA avg (peak: 180 mA – GSM, 190mA – CDMA)

GPS Specifications

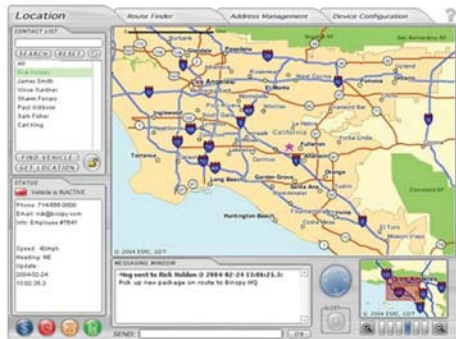
Receiver:	12 Channel
Accuracy:	10m, 2D, without SA imposed; 100m, 2D RMS, with SA imposed (95%); <5m (50%)
Velocity:	515 m/s MAX
Cold Start:	<45 sec
Warm Start:	<38 sec
Hot Start:	<8 sec
Re-acquisition:	0.1 sec general

Environmental Specifications

Operation Temperature:	-30°C to +60°C
Storage Temperature:	-40°C to +85°C
Humidity:	0-95% relative humidity at 40°C

Mechanical Specifications

Size:	3.7" x 1.6" x 2.6"
Weight:	13 ounces
Housing:	1 piece aluminum extrusion
Connectors:	Serial: DB-9 Female / RJ-45 Power: 8-pin Antennas: SMA Male connector L1 frequency (GPS) SMA Male connector (GSM/CDMA)
I/O:	3 user defined inputs, 1 ignition input 2 used defined outputs capable sinking 200mA



Internet Based

LBS SOFTWARE

- Poll and Respond
- Auto-Report
- Alarm Alerts
- Outputs to Disable Vehicle
- Geofence
- History Reports



PC Based Client Software



800 S. Harbor Blvd., Ste. 220 Anaheim, Ca 92805
(714) 502-6900 / fax: (714) 502-6905 / email: info@argonav.com

www.argonav.com